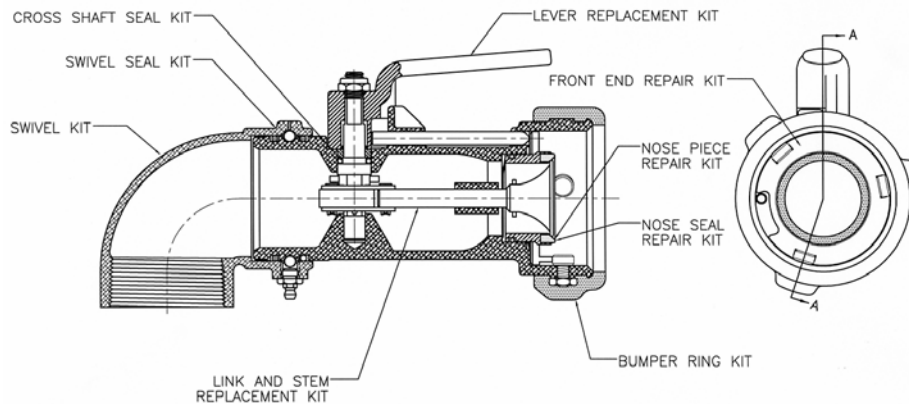


# DRY-BREAK II™ PRODUCT BULLETIN

## J72 & J79 COUPLER & ADAPTER REPAIR KITS

Emco Wheaton has developed a series of REPAIR KITS suitable for the field repair of the J72 & J79 Series Couplers & Adapters.



Our previous experience with this type of KIT PROGRAM has proven its value. If a Coupler or an Adapter has a leaky seal or 'O' Ring, or a part worn, the feeling is the installation of a complete REPAIR KIT in that area of concern will give the user far better value for the money, rather than just replacing one or two parts. The installation of the KIT renders a wear zone on the Coupler or Adapter completely rebuilt, and will consequently give longer service life. These KITS are available off the shelf, and come complete with Instruction Sheet and diagram. The part number is prominently displayed for easy stock identification. Below is a summary of the usage and key content of each type of KIT (All Kits include Silicone Oil, Diagram, and Instruction Sheet):

**Front End Repair Kits (Major):** For rebuilding the front end of the coupler. Contains Wave springs (2), O-Ring, Wave washer, Interlock plate, Interlock Pin, Bayonet studs (3) and Lock Nuts (3), Bumper ring, Nose seal, Nose Piece, Cotter Pin, and Grooved Pin.

**Front End Repair Kits (Minor – Soft Parts):** For repairing the front end of the coupler. Contains Wave springs (2), O-Ring, Wave washer, Bayonet studs (3) and Lock Nuts (3), Bumper ring, Nose seal, Cotter Pin, and Grooved Pin.

**Nose Seal Kit:** For replacing the Nose Seal. Contains Nose seal, O-Ring, and Cotter Pin.

**Nose Piece Kit:** For replacement of a damaged poppet and nosepiece. Contains Nose Piece, Nose Seal, O-Ring, Poppet, and Cotter Pin.

**Bumper Ring Kit:** For replacing bumper rings that are worn or damaged. Contains 4 Bumper rings

**Cross Shaft Seal Kit:** For repairing leaks in the cross-shaft area. Contains O-Ring, Nylock Nut, Groove Pin, Roll Pin, and Follower. "B" Version Stainless contains flat washer, shaft retainer, bearing bushing, collar, inner bushing, O-Ring, Nylock Nut.

**Lever Replacement Kit:** For replacing the lever and cross-shaft. Contains Lever, cross shaft and contents of "Cross Shaft Seal Kit" (see above).

**Link & Stem Replacement Kit:** For complete replacement of a damaged Link & Stem Assembly. Contains Link & Stem Assembly and contents of "Cross Shaft Seal Kit" (see above).

**Swivel Seal Kit:** For complete repair and rebuilding of either 90° or straight Swivel. Contains Dust seal O-Ring, Liquid seal O-Ring, Grease Fitting, Ball bearings (6), Bearing Strip, Ball Retainer Screw, and gasket (ISO / BSPP versions only).

**Swivel Replacement Kit:** For complete replacement of either 90° or straight Swivel. Contains Swivel Body, and contents of "Swivel Seal Kit" (See above).

**Adapter Repair Kit:** For all adapter repairs. Contains Seal O-Ring or Disc, Valve Spring, and where applicable, Screw, Retaining Ring, Nylon Insert, and/or Nylon Washer.

**EMCO WHEATON**  
A Gardner Denver Company



EMCO WHEATON CORP.  
2480 Bristol Circle, Oakville,  
Ontario, Canada, L6H 5S1  
Tel: 905-829-8619  
Fax: 905-829-8620  
[www.emcowheatoncanada.com](http://www.emcowheatoncanada.com)  
Revised: March 1, 2006

# DRY-BREAK II™ PRODUCT BULLETIN

## J72 & J79 COUPLER & ADAPTER REPAIR KITS

### COUPLERS

To determine the applicable repair kits for your coupler, find the part number in the list at the left-hand side. Then follow the line to determine the kit part number. For example, the cross shaft seal kit for J72C-ABN1-B is 299786. *The DRY-BREAK-II™ "-B" variants are listed on the same line as the -A variants where the same kits are applicable.*

COUPLER PART #	Nose Seal Kit	Front End Repair Kit (Minor)	Front End Repair Kit (Major)	Nose Piece Kit	Cross Shaft Seal Kit	Lever Replacement Kit	Link & Stem Replacement Kit	Swivel Seal Kit	Swivel Replacement Kit	Bumper Ring Kit	
<b>COUPLERS WITHOUT SWIVEL - ALUMINUM</b>											
J72C-ABB0-A or J72C-ABI0-B	800412	800174	299780	299813	299786	299789	299796	N/A	N/A	2 9 9 7 8 5	
J72C-ABN0-A or -B						299789					
J72C-ABN0-A001 or -B001						299794					
J72C-ABN0-A002						299789					
J72C-AVB0-A or J72C-AVI0-B	800413	800175	299781	299814	299787	299790	299797	N/A	N/A		
J72C-AVN0-A or -B						299790					
J72C-AVN0-A001 or -B001						299795					
J72C-AVN0-A002 or -B002						299790					
<b>COUPLERS WITH STRAIGHT SWIVEL - ALUMINUM</b>											
J72C-ABI1-B	800412	800174	299780	299813	299786	299789	299796	800532	299807		2 9 9 7 8 5
J72C-ABN1-A or -B		800174	299780	299813				299801	299811		
J72C-ABN1-A002		800176	299782	299815				299801	299811		
J72C-AVB1-A or J72C-AVI1-B	800413	800175	299781	299814	299787	299790	299797	800536	299808		
J72C-AVN1-A or -B								299802	299812		
<b>COUPLERS WITH 90° ELBOW SWIVEL - ALUMINUM</b>											
J72C-ABI2-B	800412	800174	299780	299813	299786	299789	299796	800533	299805	2 9 9 7 8 5	
J72C-ABN2-A or -B						299789		299803	299809		
J72C-ABN2-A001 or -B001						299794					
J72C-ABN2-A002 or -B002						299789					
J72C-AVI2-B	800413	800175	299781	299814	299787	299790	299797	800537	299806		
J72C-AVN2-A or -B						299790		299804	299810		
J72C-AVN2-A001 or -B001						299795		299804	299810		
<b>STAINLESS COUPLERS</b>											
J72C-SBN0-A	800412	800176	299782	299815	299786	299791	299798	N/A	N/A		2 9 9 7 8 5
J72C-SBI0-B			800272	800284	800274	800276	800282				
J72C-SBN0-B			800272	800284	800274	800276	800282				
J72C-SPB0-A	800414	800178	299784	299817	299788	299793	299800	N/A	N/A		
J72C-SPN0-A			800285	800293	800286	800289	800291				
J72C-SPI0-B											
J72C-SPN0-B											
J72C-SVB0-A	800413	800177	299783	299816	299787	299792	299799	N/A	N/A		
J72C-SVN0-A			800288	800280	800287	800290	800292				
J72C-SVI0-B											
J72C-SVN0-B											
<b>COUPLERS 1.5" INLET WITHOUT SWIVEL - ALUMINUM</b>											
J79C-ABN0-A or -B	800412	800174	299780	299813	299786	299789	299796	N/A	N/A	2 9 9 7 8 5	
J79C-ABN0-A001 or -B001						299794					
J79C-AVN0-A or -B	800413	800175	299781	299814	299787	299790	299797	N/A	N/A		
J79C-AVN0-A001 or -B001						299795					

### ADAPTERS

Listed below are the repair kits that are now available for Adapters.

Adapter Part #	Kit #	Adapter Part #	Kit #
All J1302 & J1304 Viton or Buna	800529	J72 STAINLESS / VITON REV. A	800331
J72 & J79 Buna REV. A Alum & Brass	494118	J72 STAINLESS / CHEMRAZ REV. A	800333
J72 & J79 VITON REV. A Alum & Brass	494119	J72 STAINLESS / VITON REV. B	800834
J72 & J79 Buna REV. B Alum & Brass	800300	J72 STAINLESS / CHEMRAZ REV. B	800833
J72 & J79 VITON REV. B Alum & Brass	800303		

**EMCO WHEATON**  
A Gardner Denver Company



EMCO WHEATON CORP.  
2480 Bristol Circle, Oakville,  
Ontario, Canada, L6H 5S1  
Tel: 905-829-8619  
Fax: 905-829-8620  
www.emcowheatoncanada.com  
Revised: March 1, 2006